

TOOLING

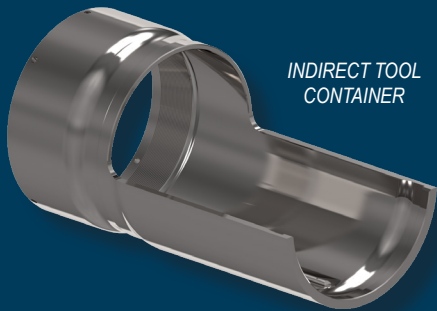
CAPACITIES / CAPABILITIES



Tooling

Castool's core products and services are outlined in our pocket brochures for extrusion and die cast.

Castool's expertise in materials, manufacturing and temperature management enables us to design and manufacture specialty tooling for many applications.

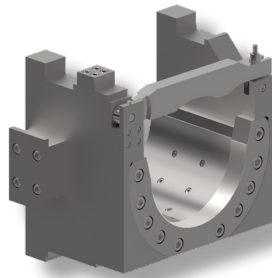


INDIRECT TOOL CONTAINER

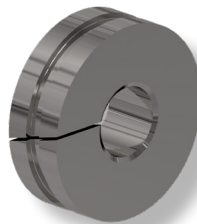
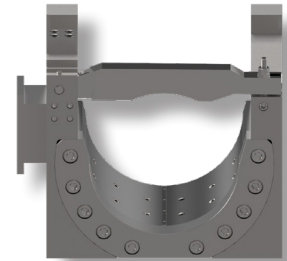
OUR CORE COMPETENCES INCLUDE:

- Design
- Simulation
- Material Analysis
- Material Characterization
- Thermal Control
- Control Systems
- Multi Axis Milling and Turning
- Large Turning and Milling
- Deep Hole Drilling
- Honing and Grinding
- Wire EDM

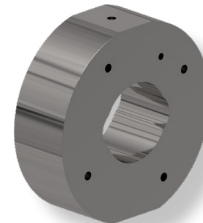
EXTRUSION



DIE SHUTTLE/DIE SLIDE



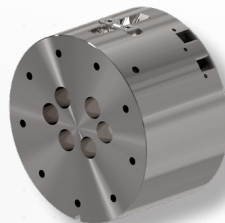
SPLIT CLEANOUT



PRESSURE RING



PRESSURE PLATE



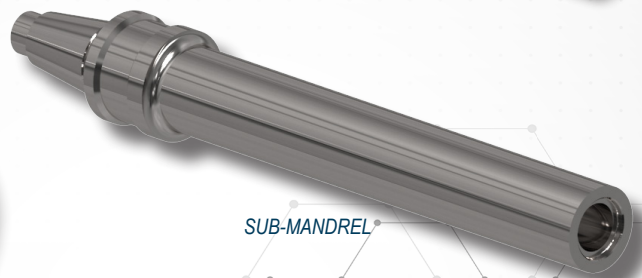
HEATED BOLSTER



INDIRECT TOOL RAM



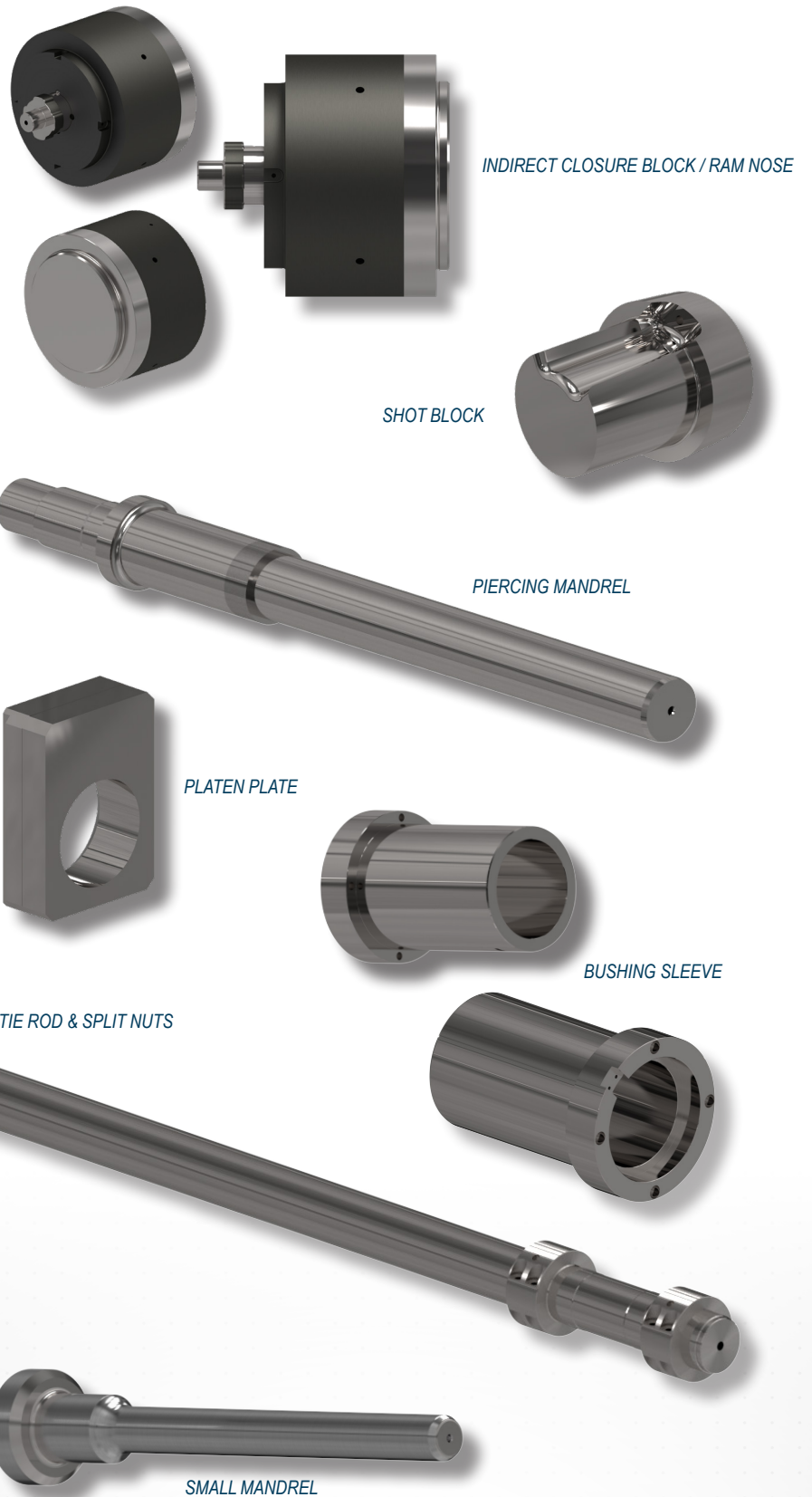
SUB-MANDREL



CAPACITIES / CAPABILITIES

Vertical Turning	74" X 72" 40 Ton (1880 mm X 1830 mm)
Horizontal Milling	80" X 80" X 100" 40 Ton (2032 mm X 2032 mm X 2540 mm)
CNC Turning	30" dia X 15' (762 mm dia X 4572 mm)
Drilling	20" dia X 70" (508 mm dia X 1778 mm)
Gun Drilling	2" dia X 70" (50.8 mm dia X 1778 mm)
Honing	20" dia X 100" (508 mm dia X 2540 mm)
Wire EDM	24" X 30" X 14" (609 mm X 762 mm X 355 mm)
Saw Cutting	32" X 32" (812 mm X 812 mm)
Heat Treatment	48" X 48" X 72" (1219 mm X 1219 mm X 1828 mm)
Nitration	40" dia X 80" (1016 mm dia X 2032 mm)
Lifting	40 Ton
Design	Solid Works
Simulation	Thermal, Mechanical, Flow

Laboratory
Services including Micro
Structure, Chemical Composition,
Material Characterization



✉ sales@castool.com
☎ +1.905.852.0121

SCHMELZMETALL

