

# INSIDER

## ISO CERTIFICATION UPDATE

In February, we had our audit and passed Intertek Systems Certification. We are now certified with new standards:

- ISO 9001:2015**
- ISO 14001:2015**
- OHSAS 18001:2007**

OHSAS is audited as per old standard because new standard is not published yet but we are ready for it.



## NEW EMPLOYEES - CASTOOL:

Connie Rogers  
*Shipping/Receiving Department*

Sanjeev Abraham Chacko  
*Equipment Department*

## NEW EMPLOYEES - CASTOOL 180:

Phudis Phollawan  
*Inside Sales*

Attapong Kaewseen  
*Welding/Manual Lathe*

Patigon Pahongsa  
*CNC Lathe*

Thinnakon Khamnueng  
*CNC Mill*

## CELEBRATING 15 YEARS

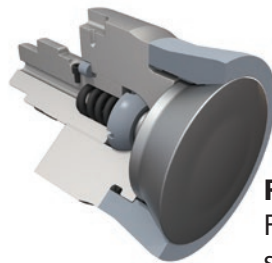
Pushpinderjit Gill

## CELEBRATING 20 YEARS

Danny Dunn, Arnim Barker and  
Paramjit Saimbhi

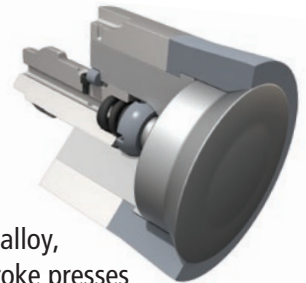
## Introducing A New Design Standard

We are introducing a new approach to providing quotes to our customers. Castool's "Preferred Tooling" refers to the design we believe best suits the application. We will of course quote and manufacture what the customer wants but in addition, we will strongly recommend "Preferred Tooling". Castool knows tooling systems from over 30 years designing, manufacturing and applying our products in the world. Let's use that expertise to help our customers make good decisions; to improve longevity, reduce scrap and be environmentally and health conscious:

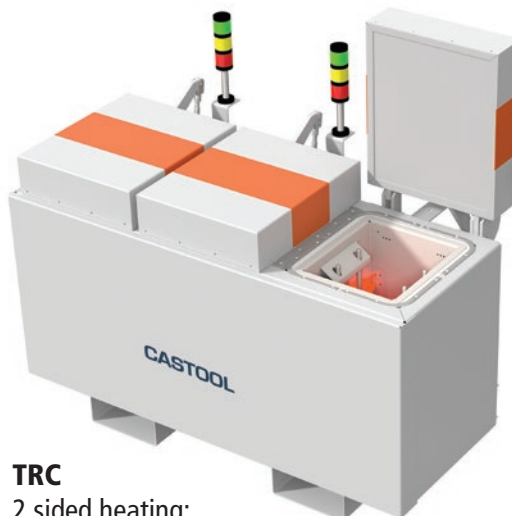


### Which Dummy Block?

**RRB**  
For standard long stroke presses up to 100,000 psi



**HPR**  
For soft alloy, short stroke presses over 100,000 psi



**TRC**  
2 sided heating;  
dies 16" and smaller

### Which Die Oven?

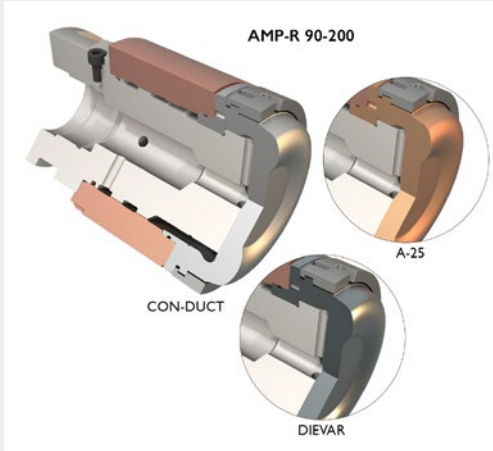


**TCX**  
4 sided heating;  
dies 18" and larger

# IMPROVEMENTS

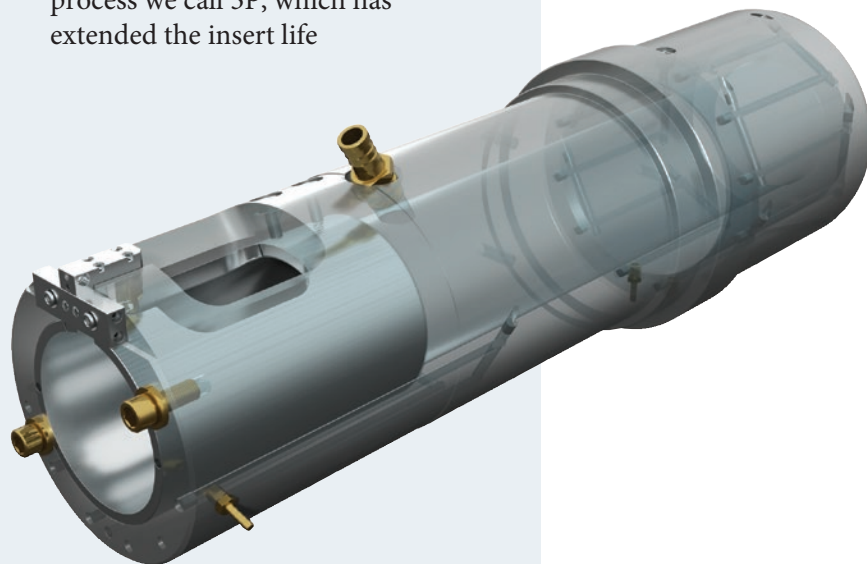
## Plunger Tips using CON-DUCT STEEL

- Con-Duct has better toughness and thermal conductivity
- Con-Duct manages thermal and impact stresses
- Con-Duct is safer to use, and has much longer life

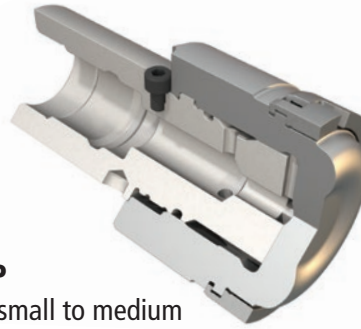


## New Shot Sleeve INSERT

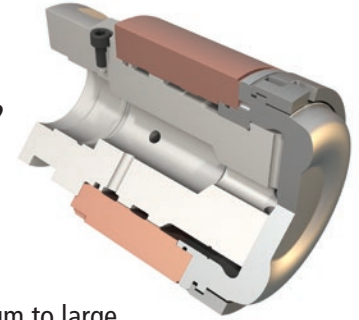
- Castool offers replaceable inserts for shot sleeves when erosion is the main cause of wear
- Castool has added a post-nitriding process we call 3P, which has extended the insert life



## Which Plunger Tip?



**ABP**  
For small to medium sized machines, from 40 mm up to 120 mm diameter

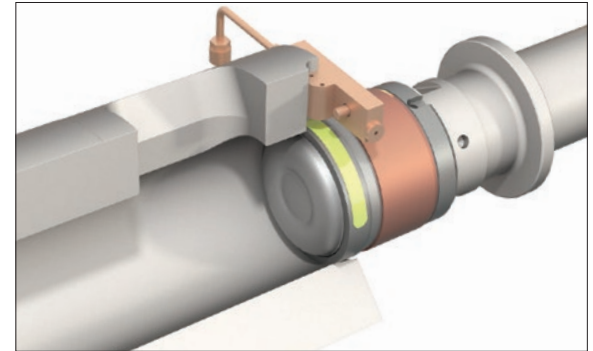


**AMP**  
For medium to large sized machines, from 100 mm up to 200 mm diameter

## Recommending a Lubrication System?

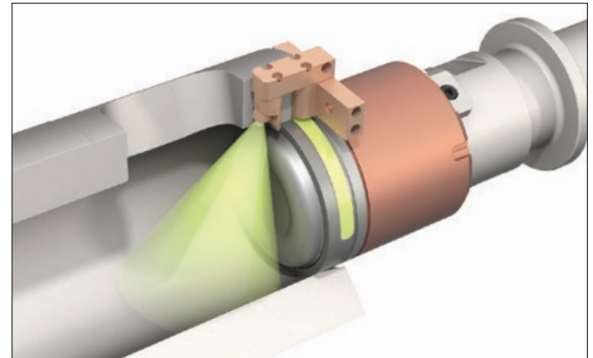
**ALD**

- For small to medium shot sleeves
- The bolt-on Allper Lube Drop (ALD) system delivers a precisely measured amount of lubricant directly on top of the plunger or plunger ring



**ACL**

- For medium to large shot sleeves
- The bolt-on Allper Combi-Lube (ACL) system delivers a precisely measured amount of lubricant directly on top of the plunger or plunger ring, and on the shot sleeve under the pour spout



## New Equipment Branding

All Castool equipment has recently been changed to a light grey that is in accordance with international safety standards. Colour stripes and words have also been added to update our branding and exposure.

# IMPROVEMENTS

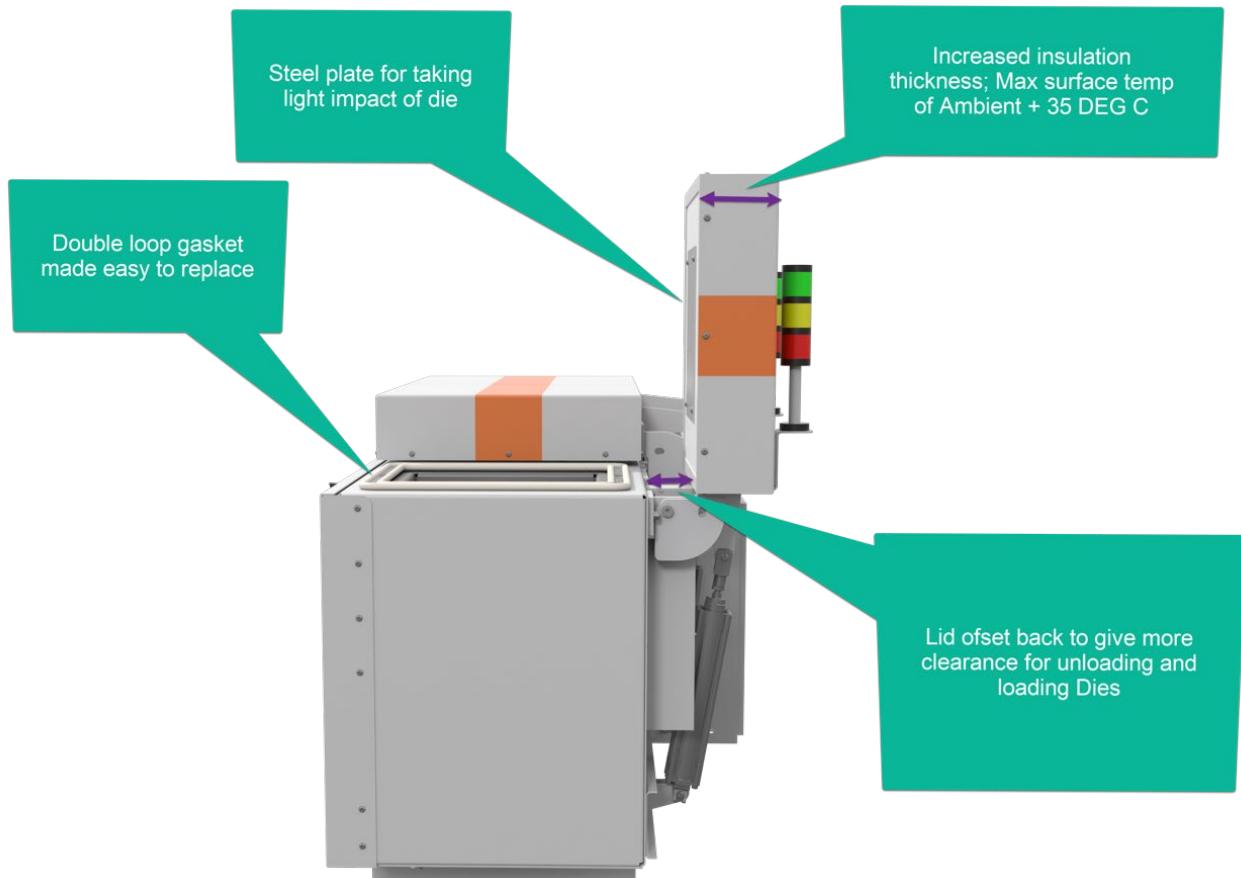
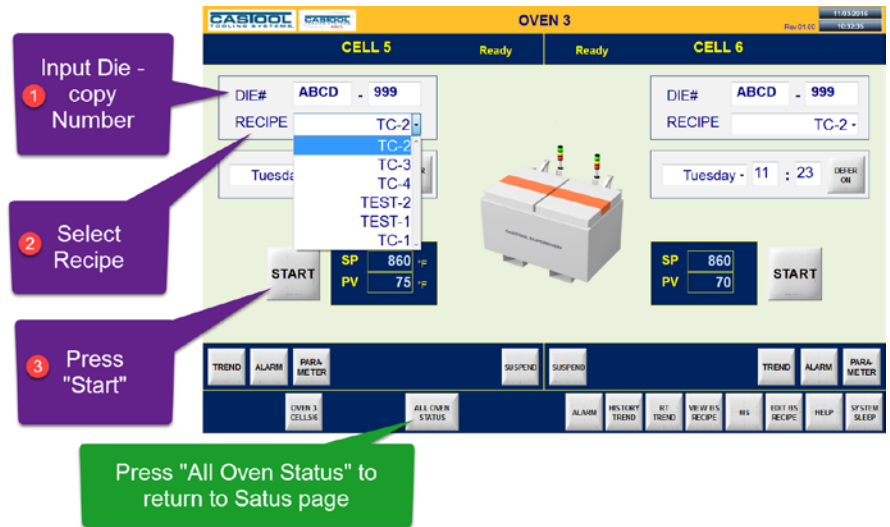
## QR Container

- New high temperature plug makes installation much easier
- Round versus flat bus bars saves space and adds integrity



## Die Ovens

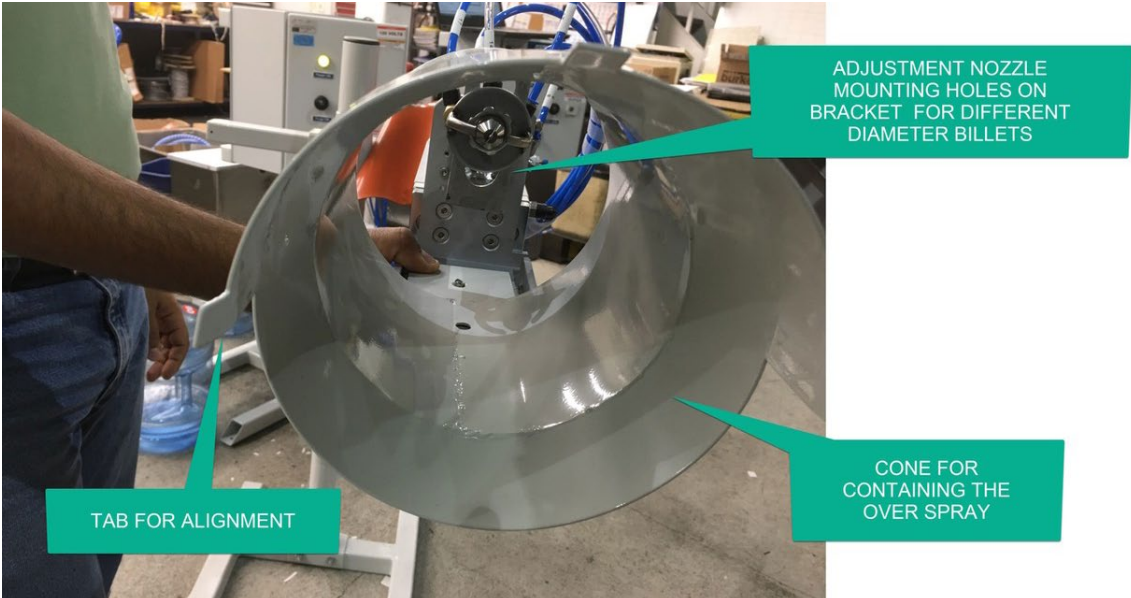
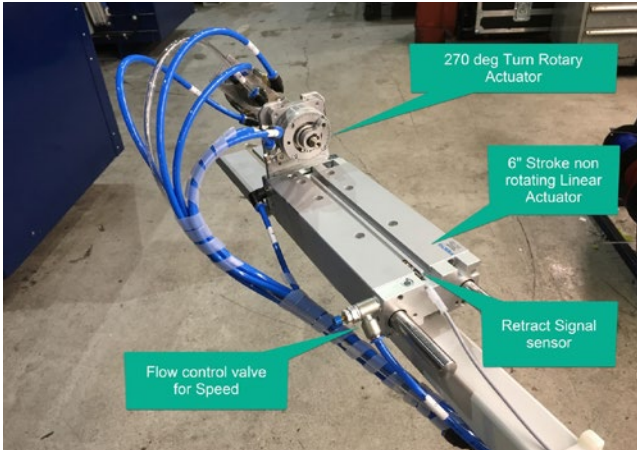
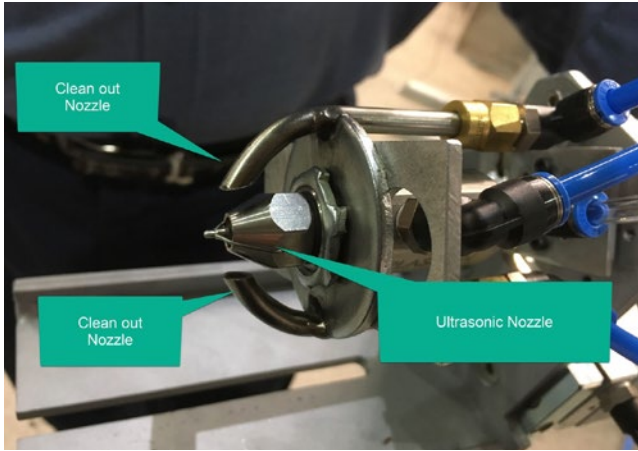
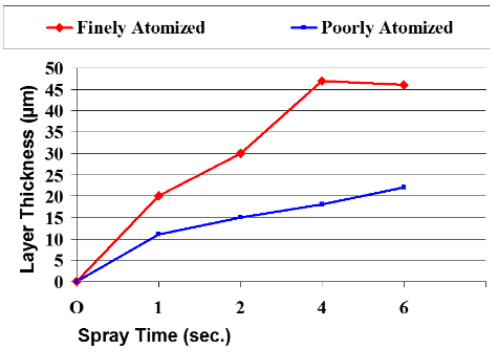
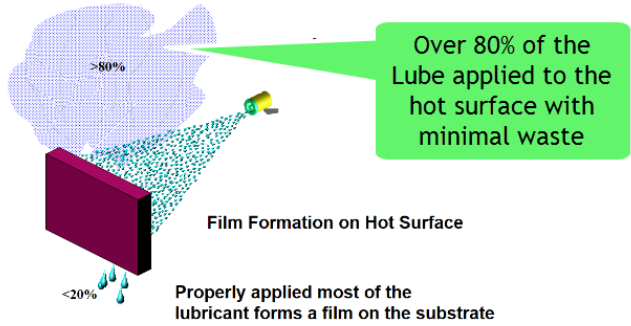
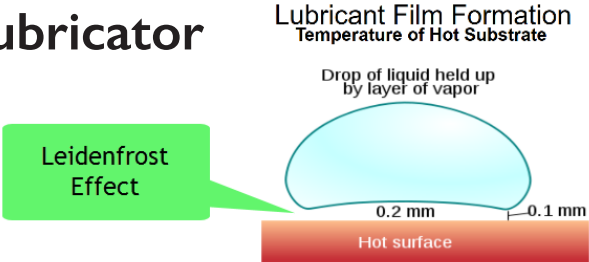
- The most obvious change is the colour
- We have also made improvements to the oven and user interface



# IMPROVEMENTS

## Billet and Shear Lubricator

### Castool Alu-ject Spray System; Atomization



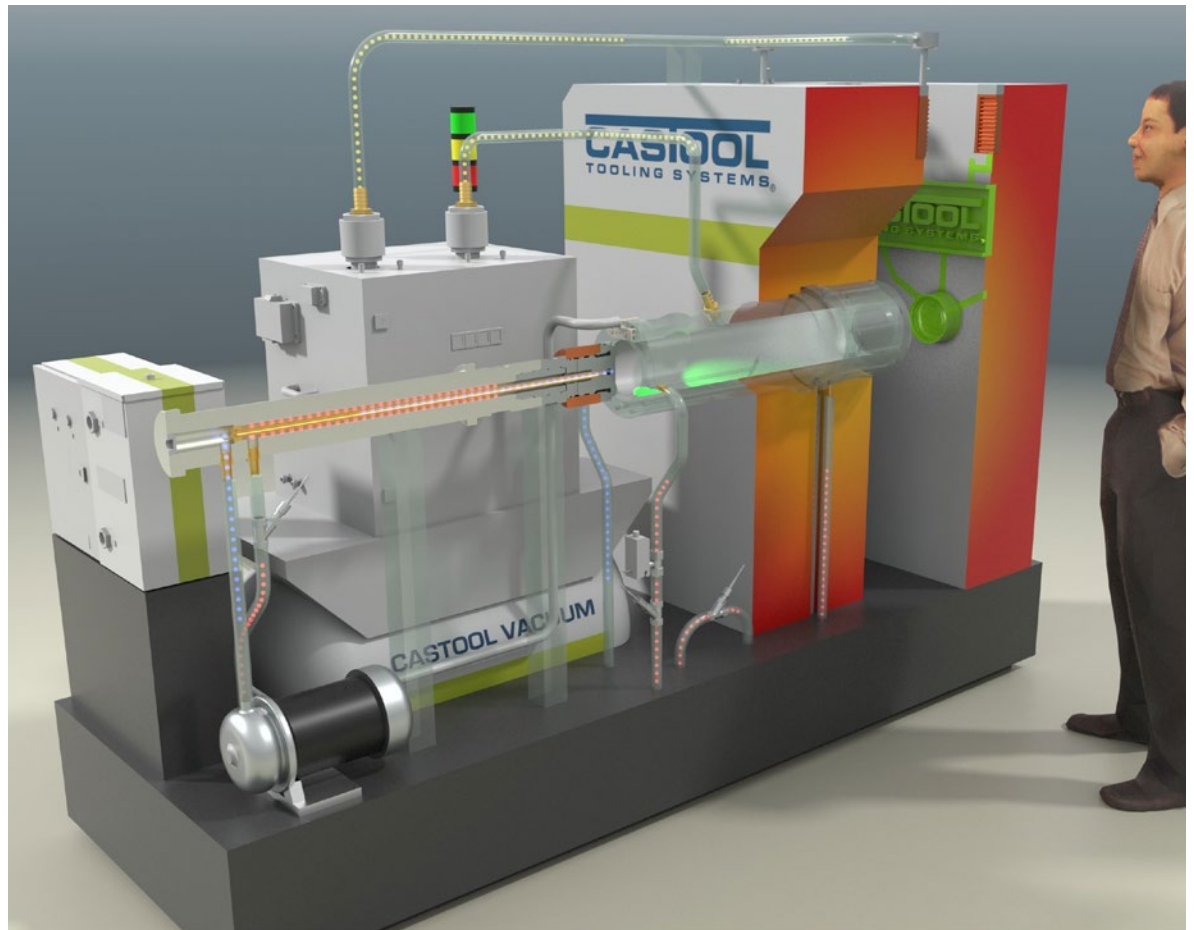
# TRADE SHOWS

## NEW Die Casting System Model

We are in the process of having this model of the complete Castool die cast system manufactured in Alberta, Canada.

This will be an excellent addition to our trade show booths around the world, giving us the opportunity to better explain each component of our system to our customers.

The model should be ready by the end of May.



## Container Model

What a great success it was to have the model of the container at trade shows last year! It really draws a crowd, allowing us to demonstrate the technology of our containers in an effective manner.



ET'16 - Chicago, USA



# WE'RE EXPANDING!

## NEW BORING MILL

Installation will be complete in April. The addition of this Horizontal Boring Mill will reduce our production time and increase our through-put for shot sleeves.



## BRIDGE TYPE MILL

Installation will be complete in July. The Bridge Type Mill will allow us to manufacture larger shot sleeves and add to our through-put.

## SALES MEETING

For sales agents, reps and technical support at



**JUNE 5 - 7, 2017**

Arrival: June 3 - 4

### MONDAY JUNE 5

#### DIE CASTING *(Customers invited)*

- Shot sleeves, plunger tips, lubrication, vacuum, chill vents, materials, etc.

### TUESDAY JUNE 6

#### EXTRUSION *(Customers invited)*

- Containers, dummy blocks, die ovens, lubrication, controls, materials, etc.

### WEDNESDAY JUNE 7

- Manufacturing, Logistics, CRM, Quality, etc.

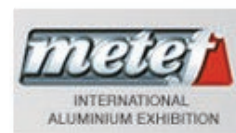
## UPCOMING TRADE SHOWS

Our global presence is key to our success



**BOOTH # 314**

May 15-17  
Dubai 2017



**BOOTH # A17/H2**

June 21 -24  
Verona 2017



**BOOTH # 1J10**

July 19-21  
Shanghai 2017

We are fortunate to have the same booth location as last year. We are hopeful that the new Die Cast model will be ready for this show!

