

# LOCATIONS



>>

www.castool.com

<<

## INTEGRATED EXTRUSION PRODUCTION FOR MAXIMUM EFFICIENCY

At Castool, we understand that no single component of the extrusion production process should be examined or evaluated in isolation. Each element interacts with at least one other complementary part of the process. When these interacting elements are equally efficient, they reinforce and enhance each other's functions.

Moreover, all Castool products are designed to promote energy conservation and are environmentally friendly. Our commitment to sustainability means that you can trust our products to not only enhance your production efficiency but also support your environmental goals.

# BETTER PROFILES FASTER

## UNLOCKING MAXIMUM PRODUCTIVITY WITH OPTIMIZED EXTRUSION DIES

The extrusion die is a unique and critical tool in the manufacturing process, capable of solving many problems but often at a significant cost. For maximum productivity, the goal is to have a die with minimal friction and heat generation. However, most dies are intentionally designed or corrected with added friction to help stabilize the process and compensate for variations. Castool's QR Container can reduce process variations.

- ☒ **SAFE**
- ☒ **RELIABLE**
- ☒ **LONG-LIFE**
- ☒ **EFFICIENT**
- ☒ **ECONOMICAL**







## PATENTED



Many of Castool's products and processes are **patented**.



## TOTAL SOLUTION

-  **CONTROL SYSTEMS**
-  **HARDWARE**
-  **TRAINING**
-  **INSTALLATION**





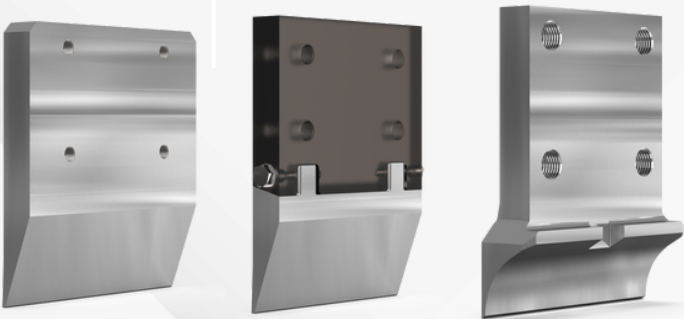
SHEAR BLADES/LUBRICATION

CONTAINERS/RELINES

STEMS/DUMMY BLOCKS

DIE HEATERS

ALLOY & PROFILE SPECIFIC



KNIFE

2-PIECE KNIFE

SCOOP

LUBRICANTS & APPLICATORS

- ✓ NO SMOKE
- ✓ WATER BASED,
- ✓ BIODEGRADABLE

Sodium Based  
Release Agent



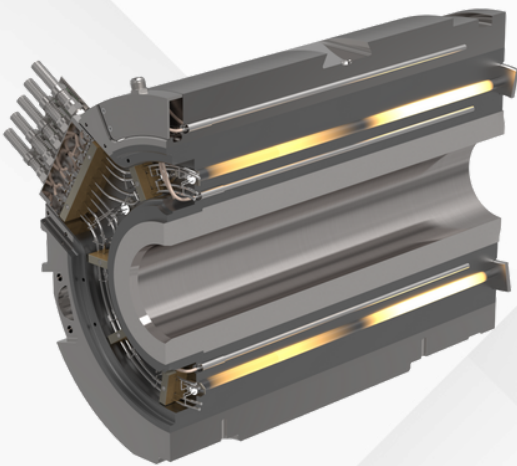
LIQUID, STICK (BAR), POWDER

- ✓ BETTER ADHESION
- ✓ ENVIRONMENTAL SAFETY
- ✓ REDUCED MAINTENANCE

Powder Based  
Release Agent



**Press Tooling** : Die Rings, Bolsters, Pressure Rings, Billet Shears, Die Slides, Horseshoes, Tie Rods, Tool Rams, Tool Containers, Heated Ram Noses, Piercing Mandrels, Scalper Blades...



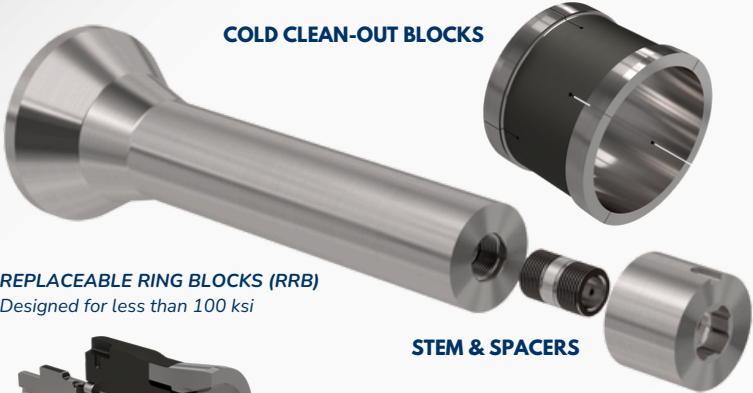
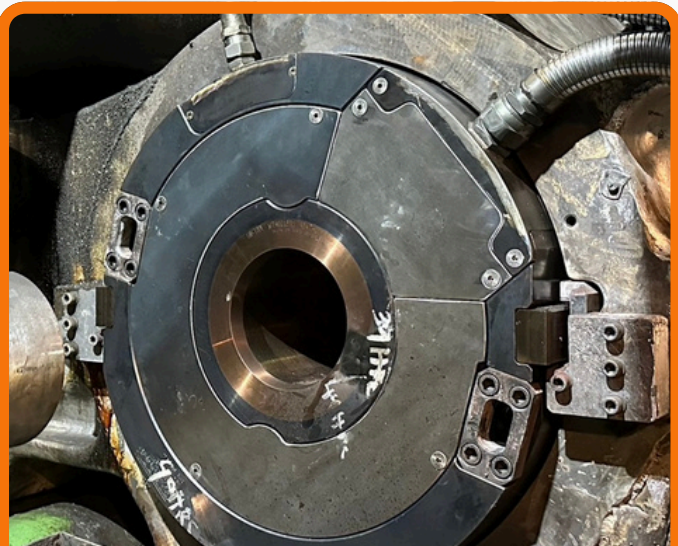
3-PIECE FOR ADDED  
STRENGTH

CONTROL  
PANELS



QR (QUICK RESPONSE)  
& STANDARD CONTAINERS

Die Management Software, Visual Optimization  
Systems, Remote Optical Pyrometers



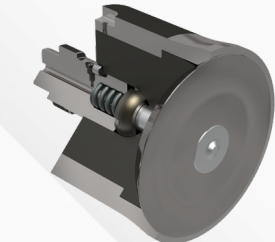
COLD CLEAN-OUT BLOCKS

REPLACEABLE RING BLOCKS (RRB)  
Designed for less than 100 ksi

STEM & SPACERS



MARATHON  
Designed for more  
than 100 ksi



APEX DISC BLOCK (ADB)

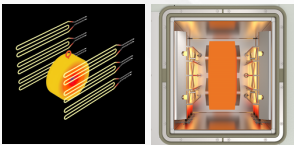
Adapts to existing stems or  
Castool's bayonet,  
designed for extra high  
pressure and long cycle  
times

DUMMY BLOCKS

- H-13(1.2344) AND TUFF TEMPER
- PROVEN DESIGNS
- EFFICIENT OPERATION
- RELIABLE

**NEW**  
APEX DISC  
DUMMY BLOCK

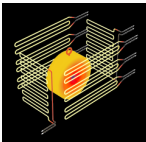
ADB-A  
Custom Fit  
ADB-B  
Bayonet System



2-SIDE HEATING



MASTER CONTROLLER



4-SIDE HEATING



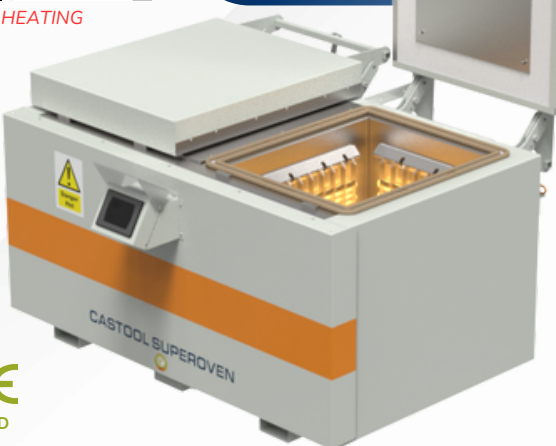
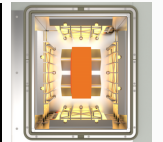
TRIPLE CELL  
TRC40/50/60



Die Jacks and Splitters Available

**NEW**  
TWIN CELL

TCX100/200/  
CUSTOM



SINGLE CELL



APPROVED